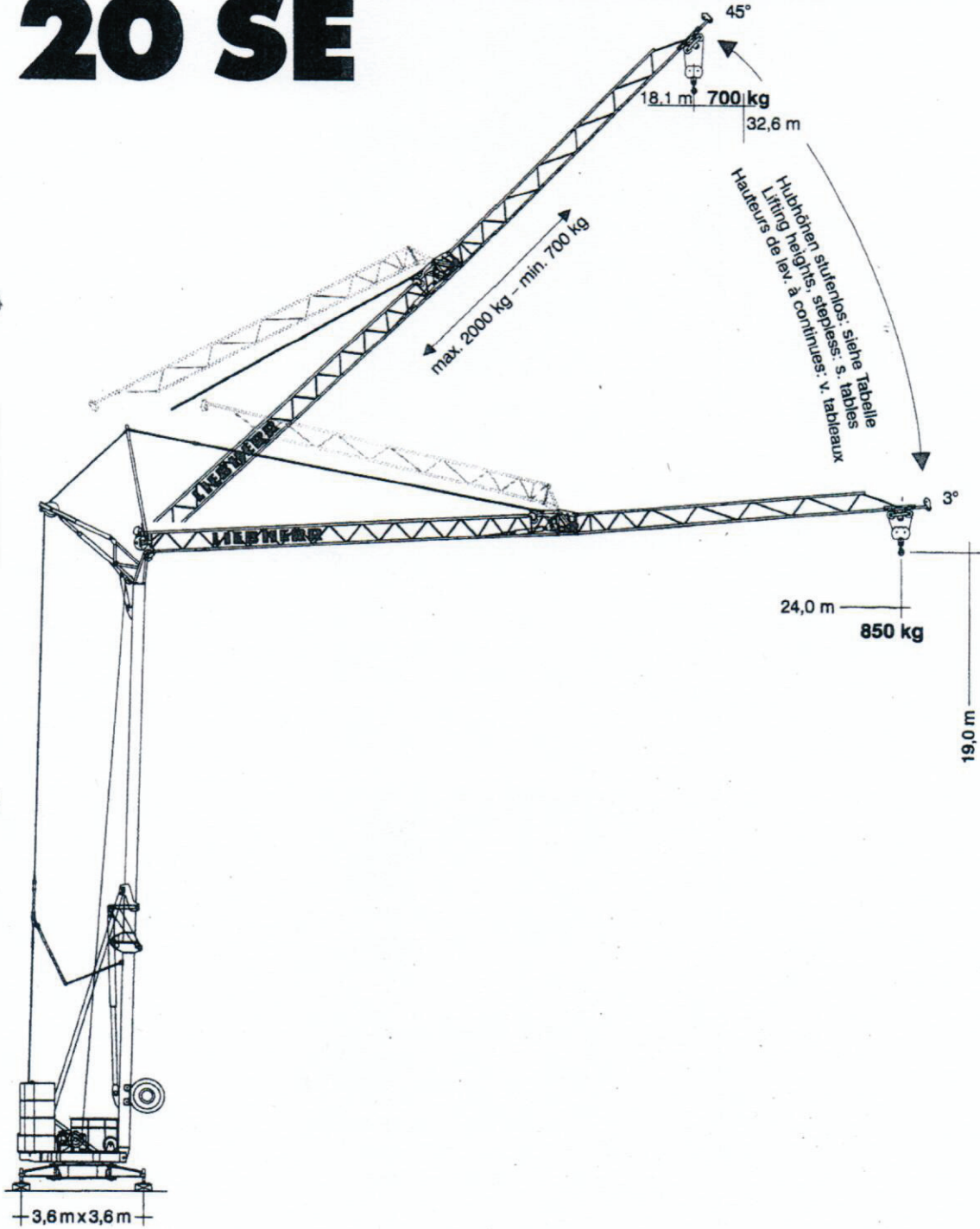


**Tower Crane  
Grue à tour**

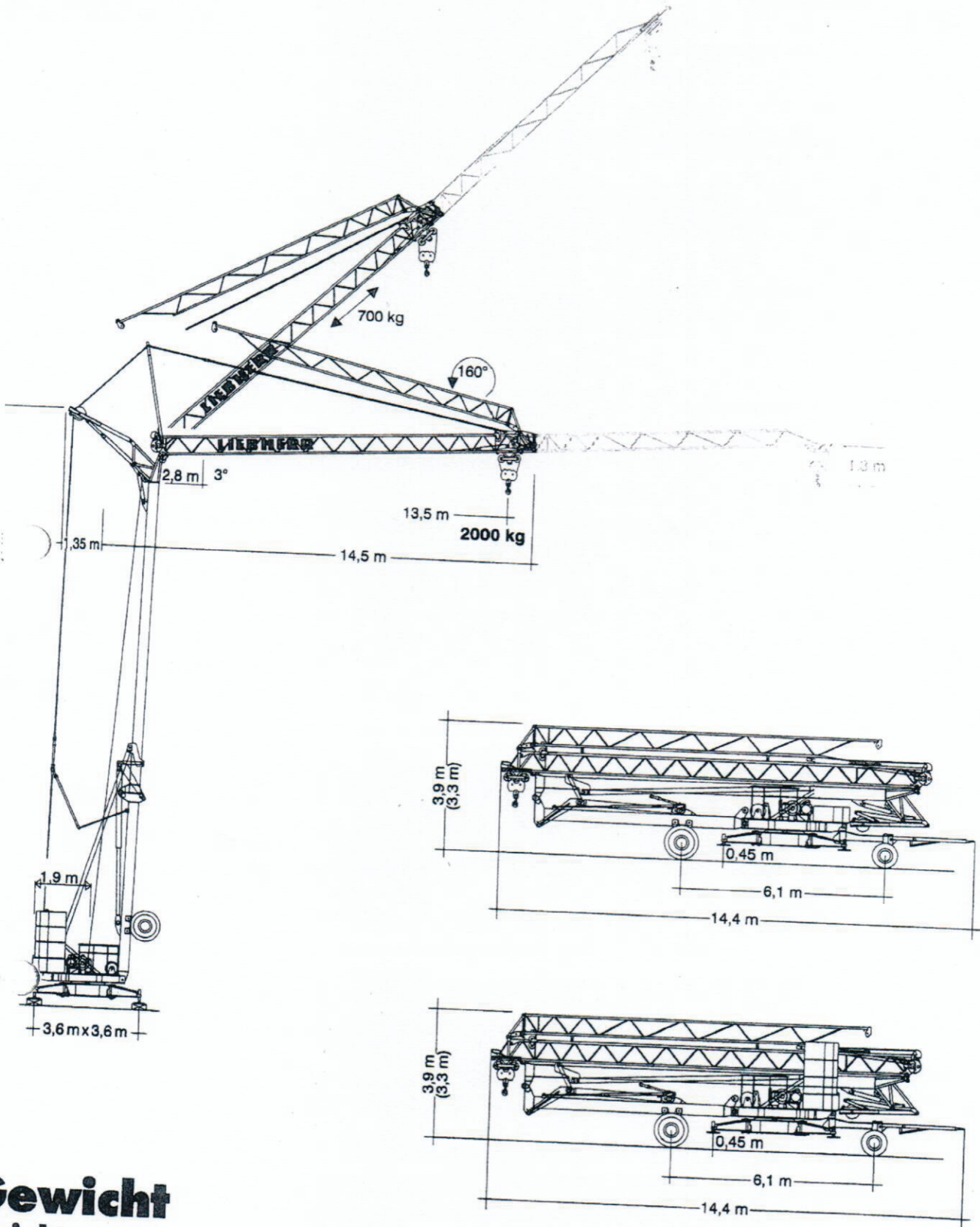
# **Turmdrehkran 20 SE**



**DIN**

Maßstab 1 : 185  
scale / échelle

# **LIEBHERR**



**Gewicht**  
**Weight**  
**Poids**

Gegegengewicht  
 Counterweight  
 Contrepoids

$r = 1,9 \text{ m}$

11500 kg

Konstruktionsgewicht ca.  
 Dead weight approx.  
 Poids de la construction env.

9800 kg

**20 SE**

# Ausladung und Tragfähigkeit

radius and capacity

portée et charge

Ausladung radius portée	max. kg m / kg	m/kg															
		9,0	10,0	11,0	12,0	13,0	14,0	15,0	16,0	17,0	18,0	19,0	20,0	21,0	22,0	23,0	24,0
0	2,8-12,3 2000	2000	2000	2000	2000	1870	1700	1550	1430	1320	1230	1150	1080	1010	950	900	850

# Auslegersteilstellung

deep angle position

position relevée

Ausladung radius portée	① Hakenhöhe (m) hoisting height Hauteur sous crochet		② Ausladung (m) radius Portée		③ Tragfähigkeit (kg) Capacity Charge		(Zwischenwerte siehe Betriebsanweisung) (Values in between see instruction manual) (Valeurs intermédiaires voir manues d'instructions)	
	10°	15°	20°	25°	30°	35°	40°	45°
①	21,5	23,3	25,2	27,0	28,7	30,0	31,8	32,6
②	2,7-10,4 -23,7	2,7-12,2 -23,3	2,7-15,1 -22,7	2,6-18,1 -22,0	2,6-21,0	2,6-20,0	2,5-18,9	2,5-18,1
③	-2000-700	-1680-740	-1340-800	-1110-870	950	830	740	700

# Geschwindigkeiten

speeds

vitesses

	0 ↔ 0,9 U/min sl./min tr./min	1,5 kW, EDC
	0 ↔ 40,0 m/min	2,8 kW, FU
	ca. 160°/min.	4,0 kW
	ca. 10°/min.	4,0 kW

Hubwerk Hoist unit Mécanisme de levage	Stufe Step Cran	kg	m/min
	1	2000	5,0
	2	2000	20,0
	3	1000	40,0

Leitungsquerschnitt bei 380 V bis 68,0 m 4 x 6 mm<sup>2</sup>  
Cross section of cable up to  
Section de câble à jusqu'à

Betriebsspannung 380 V  
Operating voltage  
Tension de service

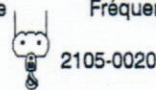
Frequenz 50 Hz  
Frequency  
Fréquence

Anschlußwert  
Power requirement  
Puissance requise

16,0 kVA

Technische Kenngröße nach BGL

Technical nominal size according to the construction machinery list (BGL)  
Grandeur caractéristique suivant le barème d'emploi des appareils (BGL)



2105-0020

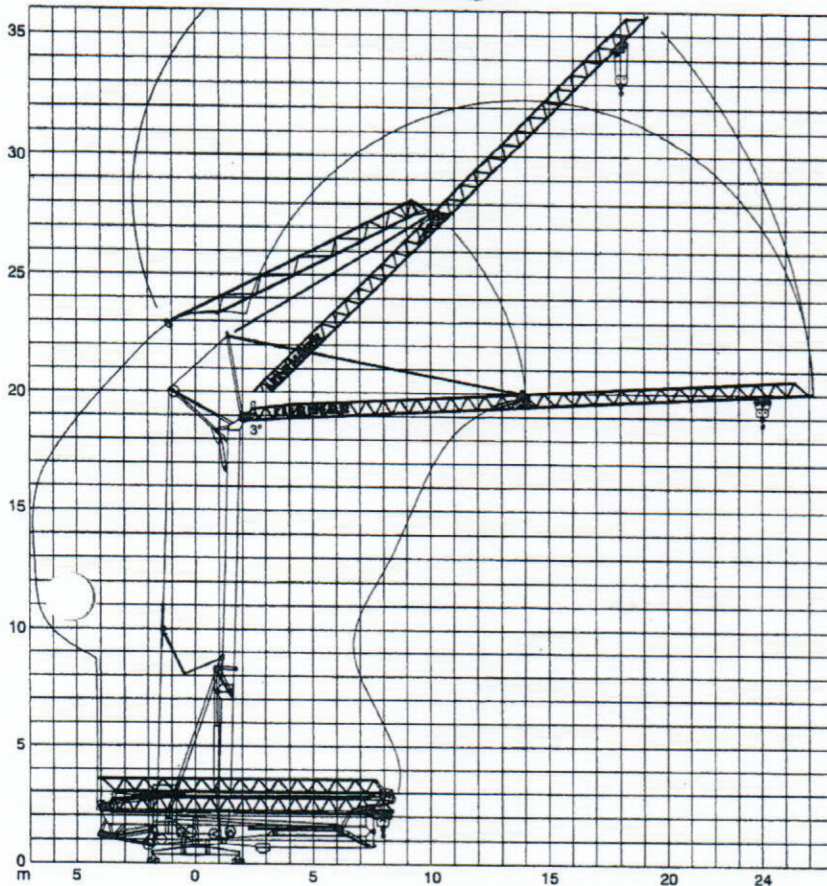
# Technische Daten - Technical data

# Caractéristiques techniques

# Aufstellvorgang

Erection procedure




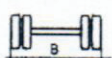

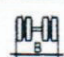

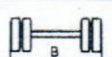

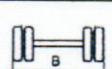
Déroulement de montage



## Kolli-Liste

Packing List

Liste de colisage

Pos. Item Rep.	Anz. Qty.				L (m)	B (m)	H (m)	kg	
1	1	Transportachse vorne, 20 SE-Adapter	Tra 100 KY 1			4,30	1,25	1,31	750
		Road transport axle front, 20 SE adapter	und/and/et KY 2			4,30	1,25	1,31	850
2	1	Transportachse hinten, 20 SE-Adapter	Tra 120 GY 1			1,60	2,50	1,20	1000
		Road transport axle behind, 20 SE adapter	und/and/et GY 1 A						
3	1	Transportachse vorne m. Zwischenadapter	Tra 100 KY 1			4,30	1,25	1,31	950
		Road transport axle front w. adapter	und/and/et KY 2			4,30	1,25	1,31	1050
4	1	Transportachse hinten m. Zwischenadapter	Tra 120 GY 1			1,75	2,50	1,25	1200
		Road transport axle behind w. adapter	und/and/et GY 1 A						
5	1	Transportachse	Tra 200 GZ 1			3,10	2,50	1,40	2700
		Road transport axle							
		Essieux de transport							

Datenblatt Nr. 120 P - 3311 H1 B3 DIN 15018 und OENORM T 3 • 08.94

Data sheet

Feuille de caractéristiques

Konstruktionsänderungen vorbehalten!  
Subject to alterations!  
Sous réserves de modifications!

Printed in Germany

Nehmen Sie Kontakt auf mit  
Contact

Mettez-vous en rapport avec

LIEBHERR-WERK BIBERACH GMBH, Postfach 1663, D-88396 Biberach an der Riß

☎ (07351) 41-0, Fax (07351) 41225